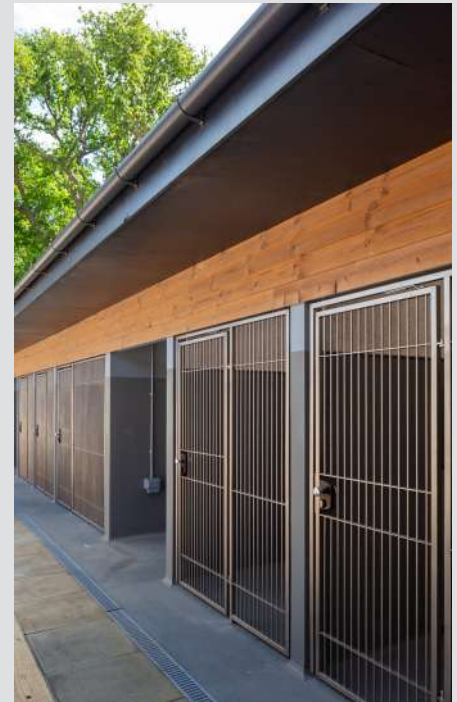




Animal Welfare Brochure

Vol.2

Established Experts in Veterinary and Animal
Welfare Design and Building Management



ACD Projects Ltd, 11 Kings Court, Willie Snaithe Road, Newmarket, Suffolk, CB8 7SG



+44 (0)1638 560343



www.acdprojects.com



enquiries@acdprojects.com

ACD PROJECTS

Volume 2



WHO WE ARE

ACD Projects is an award winning, multi-disciplinary construction management practice that specialises in veterinary and animal welfare facilities.

For over 25 years, Alex Darvill and his team at ACD have been helping veterinary professionals and animal welfare charities design and build their ideal animal care facility.

Our projects have included veterinary practices; referral hospitals - including large or small animal and equine; animal shelters and boarding facilities.

We create amazing buildings our clients can be proud of - each one is a flagship project for our clients and is personal to us too.

Our goal? To simply deliver the best build, within an optimal time frame and within your budget.

Alex Darvill
Managing Director

WHAT WE DO

If you are considering a refurbishment or extension to your existing facility, a conversion or even a new build, ACD Projects are the specialists to manage and design your venture.

With over 200 such projects on our books, and a vast number of clients, no project is too big or too small. We manage and design construction projects at all levels and budgets and use our expertise and experience to deliver great results.

We can take control of your project from concept to completion, leaving you free to manage the day-to-day running of your business.

Here at ACD we completely understand the needs of UK animal welfare centres and have also worked internationally to deliver the facilities our clients need to provide high quality care.

For any issue relating to your build, whether it's troubleshooting or evaluating your options, we can help. Why not contact us to find out more, or book a free no obligation consultation.

2

CONTACT US

11 Kings Court
Willie Snaith Road
Newmarket,
Suffolk
CB8 7SG

+44 (0)1638 560343

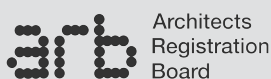
www.ACDProjects.com

enquiries@acdprojects.com

[ACDProjects](https://www.facebook.com/ACDProjects)

[ACD Projects Ltd](https://www.linkedin.com/company/ACD-Projects-Ltd)

[@ACDProjectsLtd](https://www.twitter.com/ACDProjectsLtd)



More than **25** years' experience

HOW WE WORK...

FREE INITIAL MEETING

To understand your specific situation and requirements, and to further explain our services to you, we offer a free, no obligation, initial consultation anywhere in the UK.

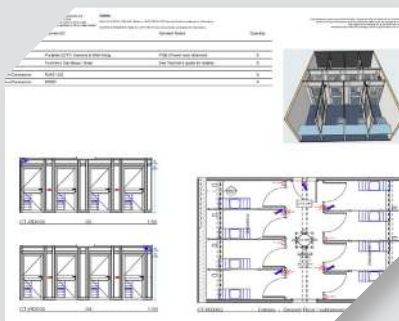
If you are further afield we may suggest a phone call in the first instance to see how we might be able to help.



3 - TENDER

We can advise on all types of procurement methods, including 'Traditional' as well as 'Design-and-Build' and 'Negotiated' forms of contract.

Whichever option you choose, we will compile a highly detailed set of drawings and 'room data sheets', which include everything from the materials and finishes to the necessary mechanical and electrical information requirements.



1 - FEASIBILITY

Whether it's an existing building you're looking to improve or expand, or an empty site you wish to build on, you'll need a feasibility study to start.

This study will help explain the options available, so you can assess whether your project is viable and commercially right for you.



4 - CONTRACT

We will then give you our professional judgement and recommendations to help you choose the right builder for you.

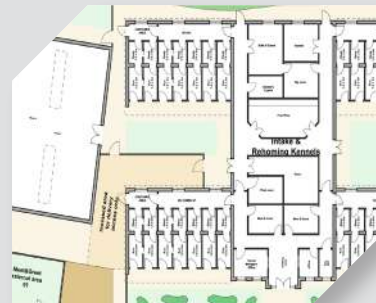
We can also assist you by preparing a contract of appointment for the contractor and, if required, prepare a letter of intent for the commencement of the contract.



2 - PLANNING

Once you're happy with the design and layout of your new building, we'll help you get planning permission.

We understand the planning process and planning law and also know our sector. This means we can pre-empt the pitfalls that might otherwise delay your application.



5 - PROJECT MANAGEMENT

Once your build starts, our project management team take over, reviewing the construction, monitoring the contract, and dealing with the contractor's questions, variation requests, and any issues that arise.

Our team will run your build efficiently, while you focus on maintaining business continuity.



CASE STUDY...



Mount Noddy Animal Centre, RSPCA Sussex West Branch

Situated in the idyllic South Downs National Park, RSPCA Sussex West's Mount Noddy Animal Centre provides the perfect location for the care and rehabilitation of animals in need.

That is why, in 2018, we were very excited to be appointed by the trustees of RSPCA Sussex West (then RSPCA Sussex, Chichester and District Branch), to redevelop the existing animal centre and in turn, increase the animal welfare facilities for the wider community.

The trustees and team at Mount Noddy approached us to design a state of the art facility that would provide the highest standards of animal welfare for cats and dogs. This would include an extension of the existing cottage into a new reception and visitor's centre, a refurbishment of spaces within the existing reception centre, and new kennelling facilities and enrichment areas for both animals.

It was very important to RSPCA Sussex West, a registered charity who operate as a separate, self-funded Branch of the National RSPCA, that the new and refurbished buildings be sustainable and sympathetic to their surroundings in the natural park. To achieve this, we incorporated the original flintstone buildings at the site into the final design. We also utilised traditional and efficient natural materials, such as thermowood cladding and cedar roof shingles.

The charity wished for the finished centre to be as energy efficient as possible. To guarantee this, we incorporated solar PV panels into the roof, and ensured that the heating on the site was thermostatically controlled - provided by heat recovery systems and high efficiency air handling units.

4



Lighting at the centre features daylight control sensors and presence detection to turn off when rooms are not occupied. This was not only an effort to conserve energy, but a way to abide by complex planning conditions.

Due to the South Downs' Areas of Outstanding Natural Beauty designation and Dark Sky Reserve status, all plans had to protect the surrounding natural rhythms of wildlife and nature from being interrupted.

One of the biggest challenges we faced during this project was the COVID-19 pandemic and the various implications it brought. This included the uncertainty of labour and resources, as well as restricted working/proximity measures, and a short supply of building materials (which we are still seeing to this day).

Thankfully, by maintaining a good relationship with all parties involved, we were able to manage expectations and plan accordingly.



With our extensive experience in animal welfare, we can ensure that our designs alleviate unnecessary stress wherever possible for the animals being cared for. At Mount Noddy, this was no different and we took measures to minimise stress in the kennels and cattery areas in particular. For example, we increased the size of the existing kennels, and designed them so that dogs would not see each other when resting or exercising.

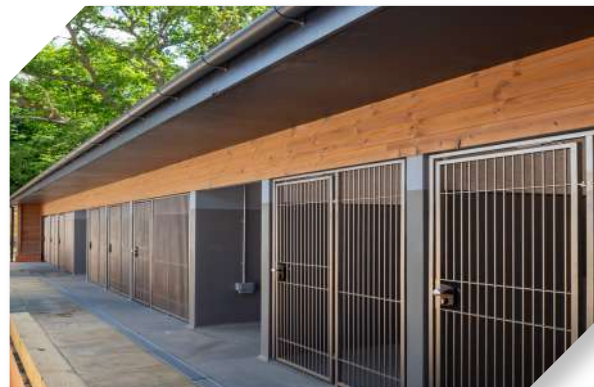
Overall, RSPCA Sussex West was a fantastic and rewarding project to work on, and we are proud to have completed a facility that will have a life changing impact on many animals in need.



5

"[Mount Noddy] is an excellent example of ACD Projects' work."

- Maureen Falloon, RSPCA Sussex West Branch



WHY ASK THE SPECIALISTS...

LATEST STANDARDS

We have been a member of the Association of Dogs and Cats Homes for many years and keep up the date with the latest practices and standards for animal welfare and homing. We also understand the regulations which different charities need to adhere to.



RECEPTIONS

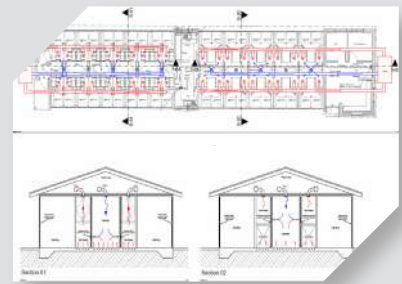
This is essentially your shop front and we work with you to make this reflect your brand & vision.

We also understand the importance of creating a stress-free environment for your clients, from the moment they walk in.



SPECIALIST DESIGN

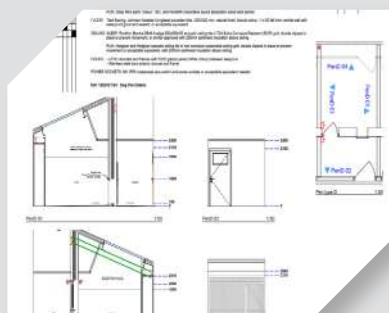
All of our cattery and kennelling centres are designed in such a way to take into consideration heating, lighting and ventilation requirements, which helps create a stress free environment for the staff and the animals.



6

ACOUSTICS

Acoustics can often be a major concern for our clients. We can help you plan and build a kennelling facility that is acoustically designed, making it stress free for the dogs, the staff and your neighbours.



DESIGNING ON A BUDGET

Over the past 25 years we have been involved in the design and installation of many kennelling and cattery enclosures including UPVC, galvanised and stainless steel.

Whether it's a refurbishment or a new build, we'll have a solution to suit any budget.



3D DESIGN

By using our computer software to design and model the practice in 3D, we can then produce images and videos for the client's benefit as well as for the contractor's understanding.

Our clients often find this useful to help gain the required funding for the build.



CAT KENNEL DESIGN

Working with animal welfare experts, and veterinary specialists, has helped us refine our ideas about what the perfect cat kennels need to feature to create the best environment for your feline patients.



DOG KENNEL DESIGN

Our knowledge of appropriate layouts, materials and finishes in relation to dog kennels is second to none.

We understand the stresses and strains this room goes through and we can make sure your building is fit for purpose,



SMALL ANIMALS

With the same principals in mind that we use for our catteries and kennels, and experience from previous dedicated builds, we can also advise on designs for small animal enclosures, including rabbitries and wildlife barns.



7

EQUINE

We have an in depth understanding of the requirements for equine facilities and can advise you on materials and designs for stabling, isolation and rehabilitation, including exercise, lunging, ménage and trotting areas.



